



INTRODUCTION TO SUPERIOR TANK CO., INC.

Superior Tank Co., Inc. offers a complete line of Bolted and Welded Steel Storage Tanks manufactured at our Rancho Cucamonga and Bakersfield, CA Branch Offices, respectively.

Superior Tank Co., Inc. has a wide variety of equipment and services available to the end-user or the General Contractor. STCI is a Class A Licensed General Contractor in several Western States and has been since 1984. STCI is accomplished in the installation of flow pipelines, earthwork and performing concrete and site work, not to mention the actual fabrication and erection of the Bolted and Welded steel Storage Tanks.

Superior Tank Co., Inc. is confident that the quality of our Bolted and Welded Steel Storage Tanks will exceed any and all of the competition for the following reasons:

STCI has the expertise to design and install oil and gas production facilities on a turnkey basis, including all required designs, engineering and calculations.

STCI offers A.W.W.A. D103-97 Bolted Tanks that are Factory Powder Coated inside and out. An NSF 61 Approved Powder Epoxy is applied to the interior and a TGIC-Polyester Powder Coating is applied to the exterior so as to prevent the breakdown or "chalking" of the coating system.

Factory Powder Coatings are virtually "Holiday Free".

STCI Manufactures and Erects our own tanks. There are no middlemen.

STCI Pressure Tests our Tank Decks and Vacuum Tests our Tank Bottoms of both the Bolted and Welded Steel Storage Tanks.

Thank you for your inquiry regarding Superior Tank Co., Inc. and the Bolted and Welded Steel Storage Tanks that we can efficiently and safely provide.

If you would like any additional information, please contact anyone of our offices and we will be happy to assist you.

Sincerely,

George Marquez,
Sales Manager

A handwritten signature in blue ink, appearing to read "George Marquez", is written over the typed name and title.

Superior Tank Co., Inc.

9500 Lucas Ranch Rd. Rancho Cucamonga, California 91730

(909) 912 0580 FAX: (909) 912 0585

VISIT US ON OUR WEBSITE AT www.superiortank.com

SUPERIOR TANK COMPANY INC

PRECISION ENGINEERED BOLTED STEEL STORAGE TANKS

Every Bolted Tank that Superior Tank fabricates is manufactured with meticulous attention to detail to meet or exceed the internationally recognized engineering standards of API, AWWA & NFPA for materials, dimensions and strength. Every bolt has a tensile strength of at least 120,000 pounds per square inch and is hot-dipped galvanized. Encapsulated & Stainless Steel Hardware is also available. Every joint, seam and bolt is sealed with a rubber gasket fabricated to exact standards and, when properly installed, guaranteed not to leak. Every steel panel is manufactured to fit, and fit right – the first time.

Quick and Easy to Install !

By fabricating and installing our own Bolted Steel Tanks, Superior Tank can often meet the tightest of schedules. Also, since Bolted Tank parts are standardized and interchangeable, costly delays to repair damages caused by inclement weather can be avoided.

Standard Bolted Tanks have flat steel floors and steel cone roofs. Open top, cone bottoms or embedded shell tanks are also available.



Tough Construction !

Our Bolted Steel Tanks are designed, engineered and built to take punishment. Our Tanks feature a steel roof and rafter construction and rugged center column support.

Aluminum roofs are also available.



**SUPERIOR TANK
COMPANY INC.®**



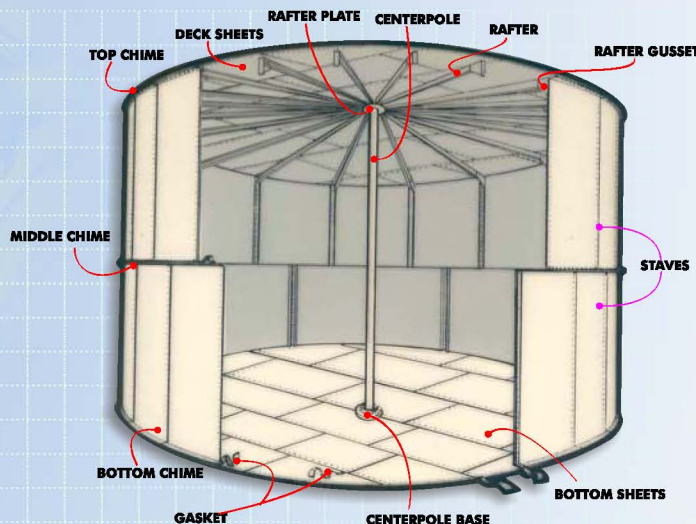
Superior Tanks, Safe and Sound.

Meticulous design and engineering, rigidly controlled manufacturing and careful field assembly all contribute to a "Superior" final product and a tank that will do its job with minimal attention for decades to come. But there's more to Superior than just our tanks. There's our service. If any problems arise, you can count on us to be back and make the necessary repairs...FAST.



Maximum Durability and Chemical Resistance

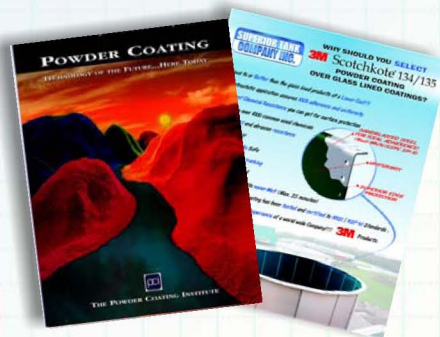
Superior Tank was the first to apply Thermoset Fusion Bonded Powder Coatings to Bolted Steel Storage Tanks. Powder Coatings are electrostatically applied and then cured at high temperatures for greater film thickness, resulting in added chemical resistance to corrosion, chipping and scratching. Epoxy Powder Coatings are NSF & FDA approved. Also available are Hot Dipped Galvanized, Stainless and Black (Bare) Bolted Steel Storage Tanks.



One Configuration Fits All

Our tanks are available in standard sizes and configurations ranging from 4,000 Gal (100 BBL's) to 2.5 million Gal (60,000 BBL's) with larger sizes, or different diameters and heights, available upon request.

The best Bolted Steel Storage Tank is one you can walk away from and know that everything is safe and sound. No leaks, no problems. With every "Superior" Bolted Tank, you get that, and more.



Call us for all your Storage, Wash Tank, and Special Treatment Tank Needs

Serving the Potable Water, Fire Protection, Waste Water and Petroleum Industries

UNITED STATES SALES AND SERVICE LOCATIONS

RANCHO CUCAMONGA	9500 Lucas Ranch Road, Rancho Cucamonga, CA 91730	(909) 912-0580 FAX (909) 912-0588
BAKERSFIELD	19436 Colombo St., Bakersfield, CA 93308	(661) 392-0188 FAX (661) 392-8770
HOUSTON	4812 Old Richmond Road, Rosenberg, TX 77471	(281) 342-0750 FAX (281) 342-0751

USA. TOLL FREE 1-(800) 221- TANK (8265)

<http://www.superiortank.com> e-mail: sales@superiortank.com



STANDARD BOLTED TANK CAPACITIES (U. S. GALLONS)

		TANK HEIGHTS (ft)							
		8'-1/2"	16'-1"	24'-1 1/2"	32'-2"	40'-2 1/2"	48'-3"	56'-3 1/2"	64'-4"
DIAMETERS (ft)	9'-2 3/4"	4,023	8,047	12,073	16,097	20,121	24,145	28,169	32,193
	12'-3 11/16"	7,155	14,309	21,468	28,624	35,780	42,936	50,092	57,248
	15'-4 5/8"	11,181	22,362	33,549	44,733	55,915	67,099	78,282	89,464
	17'-2 1/4"	13,955	27,910	41,874	55,832	69,789	83,747	97,705	111,662
	18'-5 9/16"	16,104	32,208	48,322	64,429	80,535	96,643	112,751	128,857
	21'-6 1/2"	21,920	43,841	65,775	87,701	109,624	131,550	153,476	175,399
	23'-0 5/16"	25,045	50,089	75,149	100,200	125,248	150,299	175,350	200,398
	25'-9 3/8"	31,396	62,792	94,208	125,612	157,012	188,416	219,820	251,220
	26'-8 15/16"	33,788	67,576	101,385	135,182	168,974	202,770	236,567	270,359
	29'-8 5/8"	41,720	83,440	125,186	166,917	208,642	250,373	292,103	333,829
	32'-8 3/16"	50,454	100,908	151,393	201,860	252,320	302,786	353,253	403,713
	34'-2"	55,143	110,286	165,464	220,620	275,770	330,927	386,084	441,234
	38'-7 5/8"	70,508	141,016	211,568	282,094	352,611	423,137	493,662	564,179
	40'-1 5/16"	75,991	151,982	228,020	304,030	380,030	456,040	532,049	608,050
	41'-7 1/8"	81,722	163,444	245,217	326,959	408,691	490,434	572,176	653,908
	47'-6 3/8"	106,716	213,433	320,216	426,959	533,689	640,432	747,175	853,904
	50'-6 1/16"	120,489	240,977	361,541	482,060	602,563	723,082	843,601	
	54'-11 3/4"	142,781	285,563	428,433	571,249	714,048	856,865		
	59'-5"	166,763	333,525	500,392	667,196	833,980	1,000,784		
	65'-4 5/16"	202,403	404,805	607,334	809,787	1,012,215			
	72'-9 7/16"	250,250	500,499	750,904	1,001,216	1,251,497			
	74'-3 1/4"	260,565	521,130	781,857	1,042,487	1,303,084			
	80'-2 9/16"	303,933	607,866	911,988	1,215,997				
	86'-1 7/8"	350,630	701,259	1,052,107	1,402,824				
92'-1 3/16"	400,671	801,341	1,202,261						
124'-9 5/16"	735,427	1,470,854	2,206,739						

****Other Tank Configurations Available Upon Request**

USA. TOLL FREE 1-(800) 221- TANK (8265)

FABRICATE, INSTALL & REPAIR AWWA, NFPA & API BOLTED & WELDED STEEL STORAGE TANKS

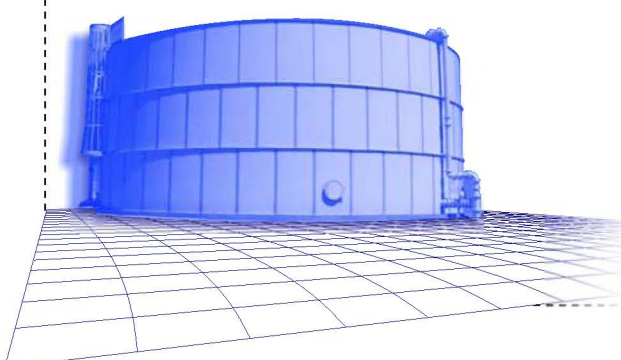
UNITED STATES SALES AND SERVICE LOCATIONS

RANCHO CUCAMONGA 9500 Lucas Ranch Road, Rancho Cucamonga, CA 91730 (909) 912-0580 FAX (909) 912-0588
 BAKERSFIELD 19436 Colombo St., Bakersfield, CA 93308 (661) 392-0188 FAX (661) 392-8770
 HOUSTON 4812 Old Richmond Road, Rosenberg, TX 77471 (281) 342-0750 FAX (281) 342-0751

VENTAS Y ATENCION AL CLIENTE PARA MEXICO Y CENTRO AMERICA

GUADALAJARA AV. Mariano Otero #3431 Piso 3 Suite 1, Col Verde Valle, Guadalajara, Jal. C.P. 45060 (33) 3123-2586

www.superiortank.com e-mail: sales@superiortank.com





Superior Protection

From
Superior Tank Co., Inc.

RESISTANCE TO:

- CHEMICALS
- CORROSION
- HEAT
- IMPACT
- ABRASION

CHARACTERISTICS:

- DURABILITY
- CHIP RESISTANCE
- HARDNESS
- HOLIDAY FREE
- SOLVENT FREE
- ENVIRONMENTALLY SAFE
- VARIOUS COLOR CHOICES

First to Introduce Powder Coating
To The
Bolted Tank Industry!

THE SUPERIOR EDGE

THE SUPERIOR EDGE

Superior Tank Co., Inc. has the clear edge over its competitors in factory coated bolted tanks. We have elevated the level of quality by adapting the most advanced coating technology available in the bolted tank industry using electrostatically applied Thermoset Fusion Bonded Powder Coating

TGIC Polyester Exterior Coating

Protects tanks from sunlight and severe weather conditions.

Structural Steel

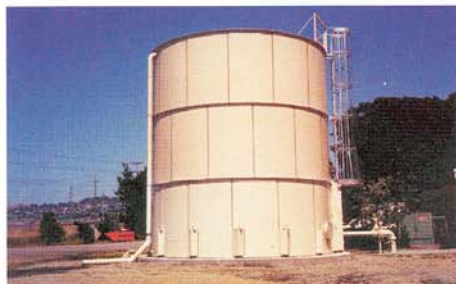
Only high quality steel (minimum ASTM A570, Grade 40 and ASTM A36) is used on Superior tanks.

Interior Epoxy Coating

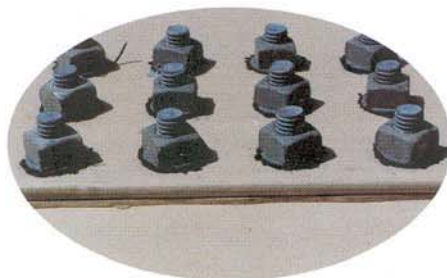
Provides extended tank life in even the most extreme conditions while adhering to NSF 61 standards.

Superior Edge

Electrostatic application protects the steel edges from chipping and prevents excessive corrosion.



Superior's powder coating adheres to completely cover every square inch of your bolted tank including those tough edges and corners that seem to be magnets for corrosion.



With Superior's powder coating the edges and corners of the steel plates can be coated in an almost rounded fashion.



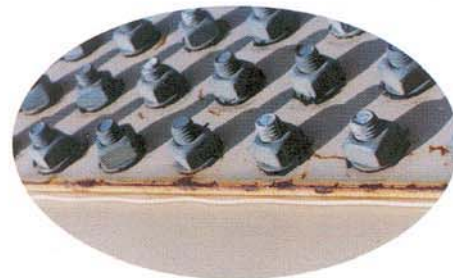
SUPERIOR TANK CO., INC.

9500 Lucas Ranch Rd.
Rancho Cucamonga, CA 91730
(909) 912-0580 fax (909) 912-0588

Email: sales@superiortank.com
Website: www.superiortank.com



Powder coating is a dry finishing process, using finely ground particles of pigment and resin that are electrostatically charged and sprayed onto a part to be coated.



Liquid based epoxy coatings taper away from the edges and result in excessive corrosion.

Every Superior tank is manufactured with meticulous attention to detail and meets or exceeds API / AWWA standards for materials, dimensions and strength.

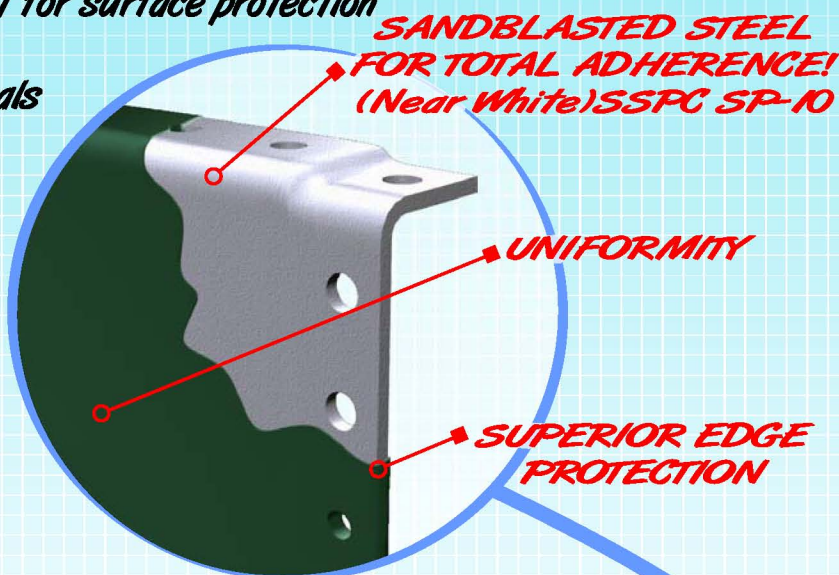
Superior tanks are available in standard sizes and configurations ranging from 4,000 gallons to over 2 million gallons.

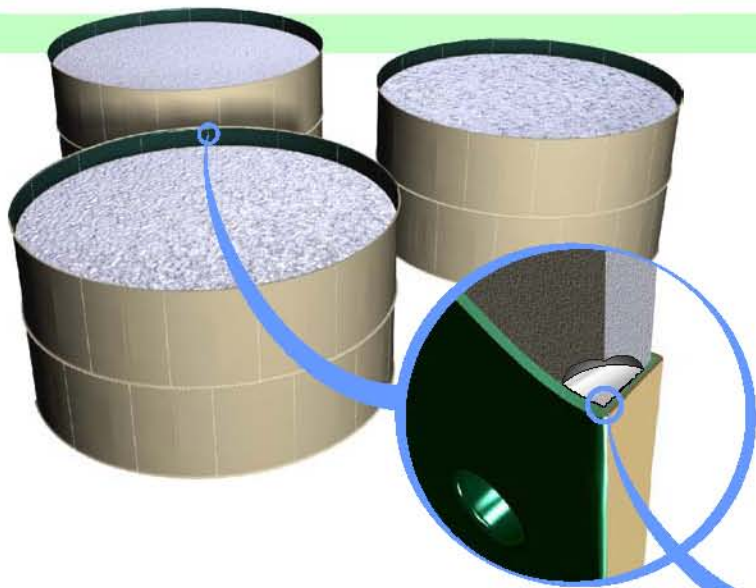
Superior Tank also offers complete hassle free installation of your new tank including all necessary construction and ground work required to assure a perfect installation every time.



WHY SHOULD YOU **SELECT** 3M™ Scotchkote™ 134/135 POWDER COATING OVER GLASS LINED COATINGS?

- Equal to or **Better** than the glass lined products at a **Lower Cost!!**
- Electrostatic application assures **100% adherence and uniformity**
- The **Best Chemical Resistance** you can get for surface protection
- Tested in over 1000 common used chemicals
- High impact and abrasion **resistance**
- Easy to repair
- Environmentally Safe
- Flexible with **no cracking**
- No primer required
- Fast cure, because its **never Wet!** (Max. 25 minutes)
- Scotchkote 134/135 coating has been **tested and certified to ANSI / NSF-61 Standards**.
- And all the **support and experience** of a world wide Company!!!! **3M™ Products.**





3M Scotchkote 134/135

POWDER COATING

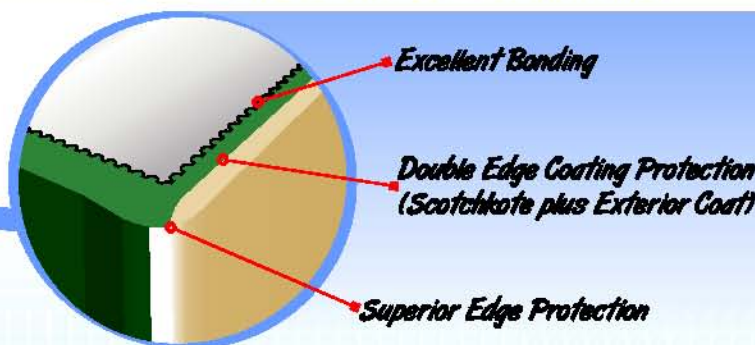
Scotchkote 134/135 Fusion Bonded Epoxy Coating has been used extensively in the oil and gas industry to coat the exterior and the interior of line pipe; over 40,000 (65,000 Km) miles of Scotchkote coated pipe has been installed throughout the world.

Certified SUPERIOR EDGE PROTECTION!!

Chemical/Pressure/Temperature Resistance

Operating Results

Test Conditions	Gas Phase	Results
Autoclave, 120°F (49°C) 48 hours, 1500 psi (10.3 Mpa)	99.5% CO ₂ 0.5% H ₂ S	Excellent adhesion, no coating loss or blisters in aqueous, hydrocarbon, or gas phase
Autoclave, 150°F (66°C) 24 hours, 2200 psi (15.2 Mpa)	80% CH ₄ 12% CO ₂ 8% H ₂ S	Excellent adhesion, no coating loss or blisters in aqueous, hydrocarbon, or gas phase
Autoclave, 200°F (93°C) 24 hours, 3300 psi (22.8 Mpa)	86% CH ₄ 8% CO ₂ 6% H ₂ S	Excellent adhesion, no coating loss or blisters in aqueous, hydrocarbon, or gas phase
Autoclave, 300°F (149°C) 24 hours, 3000 psi (20.7 Mpa)	90% CH ₄ 10% CO ₂ Trace H ₂ S	Excellent adhesion, no coating loss or blisters in aqueous, hydrocarbon, or gas phase



Typical Properties

Property	Value
Color	134 - Forest Green / 135 - Gray
Specific Gravity - Powder (Air Pycnometer)	1.51
Coverage	127 ft ² /lb/mil (0.66 m ² /kg/mm)
Fluidized Bed Density	33 lbs/ft ³ (530 kg/m ³)
Shelf Life at 80°F (27°C)	18 months
Average Gel Time at 400°F (204°C)	134/70 seconds 135/45 seconds
Pill Flow	75 - 100 mm
Edge Coverage	12% - 18%
Minimum Explosive Concentration	0.03 oz/ft ³ (30.6 g/m ³)
Ignition Temperature	886°F (530°C)

Chemical Resistance Exposure at 73°F (23°C) *

Acetic Acid up to 25%	Calcium Disulfide	Gasoline Leaded	Nickel Nitrate	Sodium Meta Silicate up to 5%
Acetone (softened)	Carbon Tetrachloride	Gasoline Unleaded	Nickel Sulfate	Sodium Nitrate
Aluminum Chloride	Caustic Potash	Glycerine	Nitric Acid up to 30%	Sodium Sulfate
Aluminum Hydroxide	Caustic Soda	Heptane	Nonane	Sodium Thiosulfate up to 5%
Aluminum Nitrate	Chlorine 2%	Hexane	Octane	Stannic Chloride
Aluminum Sulfate	Citric Acid up to 25%	Hexylene Glycol	Oxalic Acid	Sulfur
Ammonium Carbonate	Copper Chloride	Hydrochloric Acid up to 25%	Pentane	Sulfuric Acid up to 80%
Ammonium Chloride	Copper Nitrate	Hydrofluoric Acid up to 40%	Perchloroethylene	Synthetic Sea Fuel (80% Naphtha)
Ammonium Hydroxide up to 100%	Copper Sulfate	Hydrogen Sulfide	Phosphoric Acid up to 50%	20% Toluene, 15% Xylene
Ammonium Nitrate	Crude Oil	Isopropyl Alcohol	Phosphorous Trichloride	5% Benzene)
Ammonium Phosphate	Cyclohexane	Jet Fuel	Potassium Aluminum Sulfate	Synthetic Silage
Ammonium Sulfate	Cyclohexene	Kerosene	Potassium Bicarbonate	Tetrapropylene
Amyl Alcohol	Cyclopentane	Linseed Oil	Potassium Borate	Toluene
Barium Carbonate	Detergent	Lubricating Oil	Potassium Carbonate	Triethylene Glycol
Barium Chloride	Diesel Fuel	Magnesium Carbonate	Potassium Chloride	Trisodium Phosphate
Barium Hydroxide	Diethylene Glycol	Magnesium Chloride	Potassium Dichromate up to 10%	Turpentine
Barium Nitrate	Dipropylene Glycol	Magnesium Hydroxide	Potassium Hydroxide	Undecanol
Barium Sulfate	Ethanol (softened)	Magnesium Nitrate	Potassium Nitrate	Urea
Benzene	Ethylbenzene	Magnesium Sulfate	Potassium Sulfate	Urine
Boric Acid	Ethylene Glycol	MEK (softened)	Propylene Glycol	Vinegar
Borax	Ferric Chloride up to 50%	Mercuric Chloride	Sewage	Water
Butyl Alcohol	Ferric Nitrate	Methanol (softened)	Silver Nitrate	Chlorinated
Cadmium Chloride	Ferric Sulfate	MIBK (Methyl Isobutyl Ketone)	Soap Solution	Demineralized
Cadmium Nitrate	Ferrous Nitrate	Mineral Oil	Soaps	Distilled
Cadmium Sulfate	Ferrous Sulfate	Mineral Spirits	Sodium Bicarbonate	Salt
Calcium Carbonate	Formaldehyde up to 100%	Molasses	Sodium Bisulfate	Sea
Calcium Chloride	Formic Acid up to 10%	Motor Oil	Sodium Carbonate	Xylool
Calcium Hydroxide	Freon; Gas and Liquid	Muriatic Acid	Sodium Chlorate	Zinc Chloride
Calcium Nitrate	Gas (Mfg)	Naphtha	Sodium Chloride	Zinc Nitrate
Calcium Sulfate	Gas (Natural)	Nickel Chloride	Sodium Hydroxide	Zinc Sulfate

*Tests conducted for two years on similar products. No effect unless otherwise stated.

SALES AND SERVICE LOCATIONS

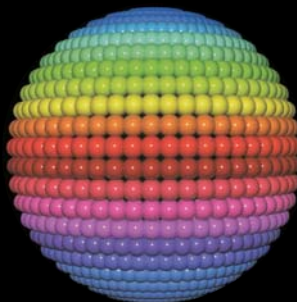
RANCHO CUCAMONGA 9500 Lucas Ranch Road, Rancho Cucamonga, CA 91730
BAKERSFIELD 19436 Colombo St., Bakersfield, CA 93308
HOUSTON TX 4812 Old Richmond Road, Rosenberg, TX 77471

(909) 912-0580 FAX (909) 912-0585
(661) 392-0188 FAX (661) 392-8770
(281) 342-0750 FAX (281) 342-0751



VISIT US ON OUR WEB SITE AT <http://www.superiortank.com>

© SUPERIOR TANK COMPANY INC. All rights reserved. All trademarks are property of their respective owners.



DuPont Powder Coatings

Color Card



Almond
PFT 500S8



Uni-Cream
PFL 503S9



Tank Tan
ETF602P7



Evergreen
PFG 500S9



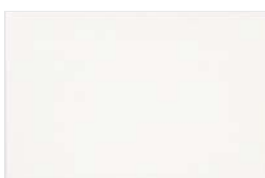
ASA-70 Gray
PFH 502S8



Camel
PFT 401S6



Superior Sand
PFT 609S6



Sky White PFW510S9
Sky White HP PFW665S9
Sky White PW PFW668S9



Hunter Green
PFG509S8



ASA-61 Gray
PFH509S5

* Other colors available upon customer request, additional charges will apply

- NFS Standard 51 - Food Equipment Materials.
- Food & Drug Administration (FDA): Epoxy & Hybrid Formulations that meet the guidelines under the code of regulations, Title 21, Section 175.300; Resinous and Polymeric Coatings
- NFS Standard 61 - Addresses crucial aspects of drinking water system components
- Premium Weathering
- Stock available in antimicrobial version

First letter of product System, Binder Types:

E: Epoxy, P: TGIC-Polyester, A: Aromatic-Urethane, H: Non-TGIC Polyester(HAA Curative)

	Epoxy	Hybrid	Aromatic Urethane	Aliphatic Urethane	TGIC Polyester	Polyester Wrinkle	NON-TGIC Polyester
Hardness	● ● ● ● ●	● ● ● ● ●	● ● ● ● ●	● ● ● ● ●	● ● ● ● ●	● ● ● ● ●	● ● ● ● ●
Flexibility	● ● ● ● ●	● ● ● ● ●	● ● ● ● ●	● ● ● ● ●	● ● ● ● ●	● ● ● ● ●	● ● ● ● ●
Overbake Stability	● ●	● ● ● ● ●	● ●	● ● ● ● ●	● ● ● ● ●	● ● ● ● ●	● ● ● ● ●
Exterior Durability	●	●	● ●	● ● ● ● ●	● ● ● ● ●	● ● ● ● ●	● ● ● ● ●
Corrosion Protection	● ● ● ● ●	● ● ● ● ●	● ● ● ● ●	● ● ● ● ●	● ● ● ● ●	● ● ● ● ●	● ● ● ● ●
Chemical/Solvent Resistance	● ● ● ● ●	● ● ● ● ●	● ● ● ● ●	● ● ● ● ●	● ● ● ● ●	● ● ● ● ●	● ● ● ● ●
Ease of Application	● ● ● ● ●	● ● ● ● ●	● ● ● ● ●	● ● ● ● ●	● ● ● ● ●	● ● ● ● ●	● ● ● ● ●

This table shows the difference among binder types in the various performance characteristics

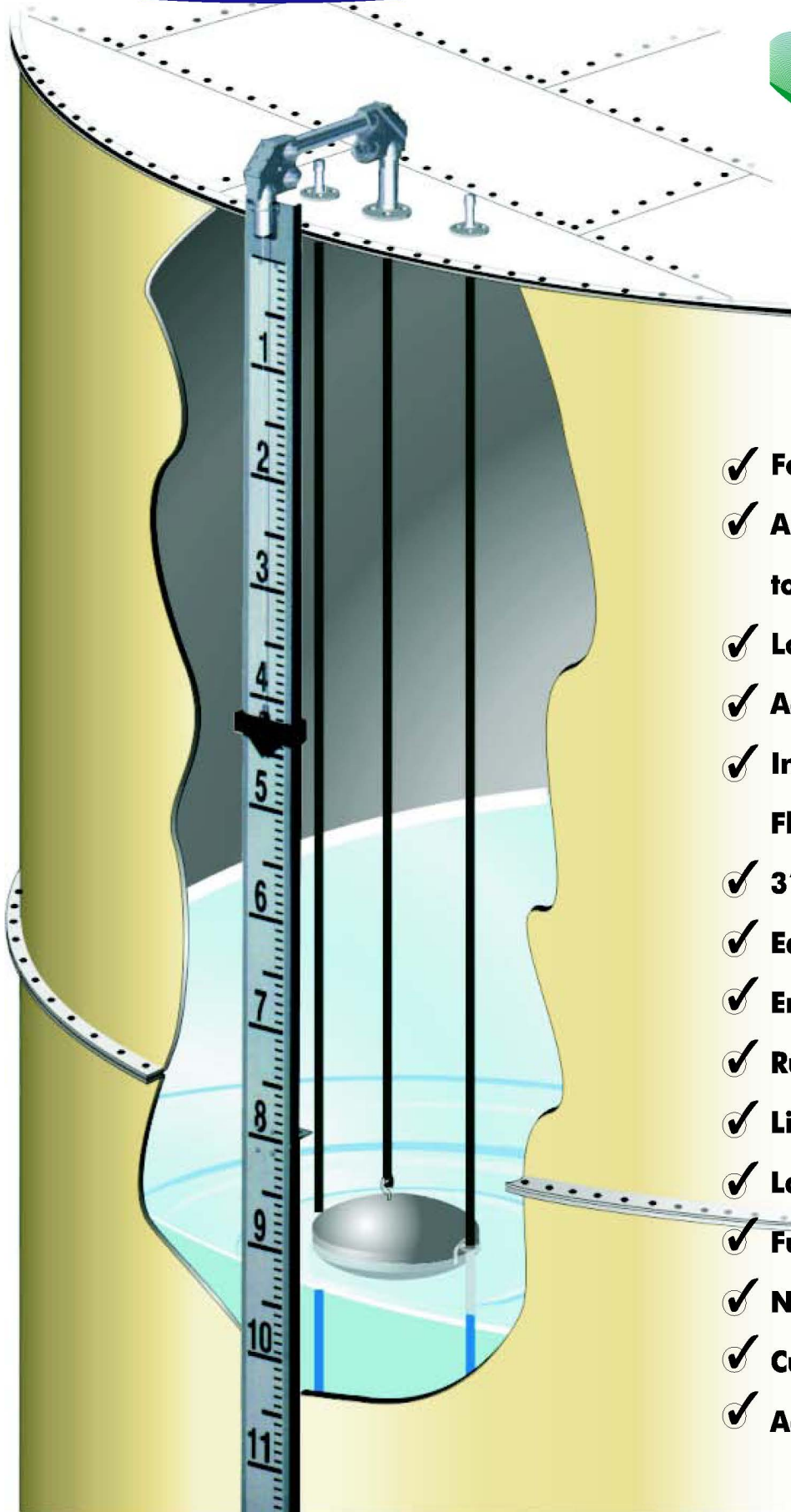
● Not Recommended ● Fair ● Good ● Very Good ● Excellent



***PRECISION ENGINEERED BOLTED
STEEL STORAGE TANKS***



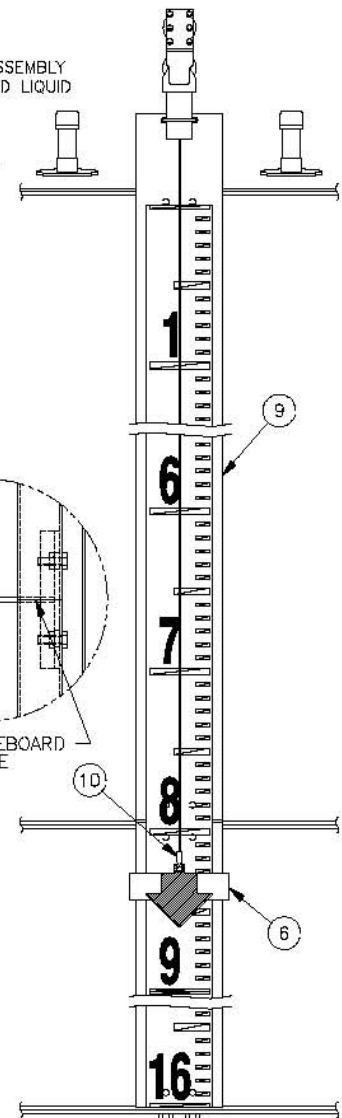
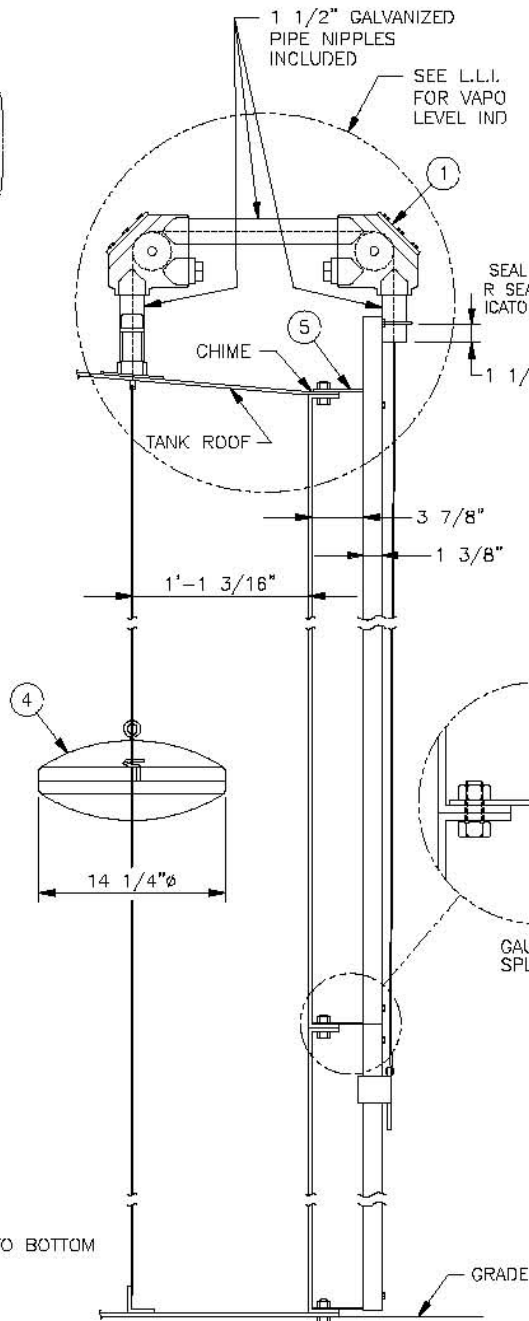
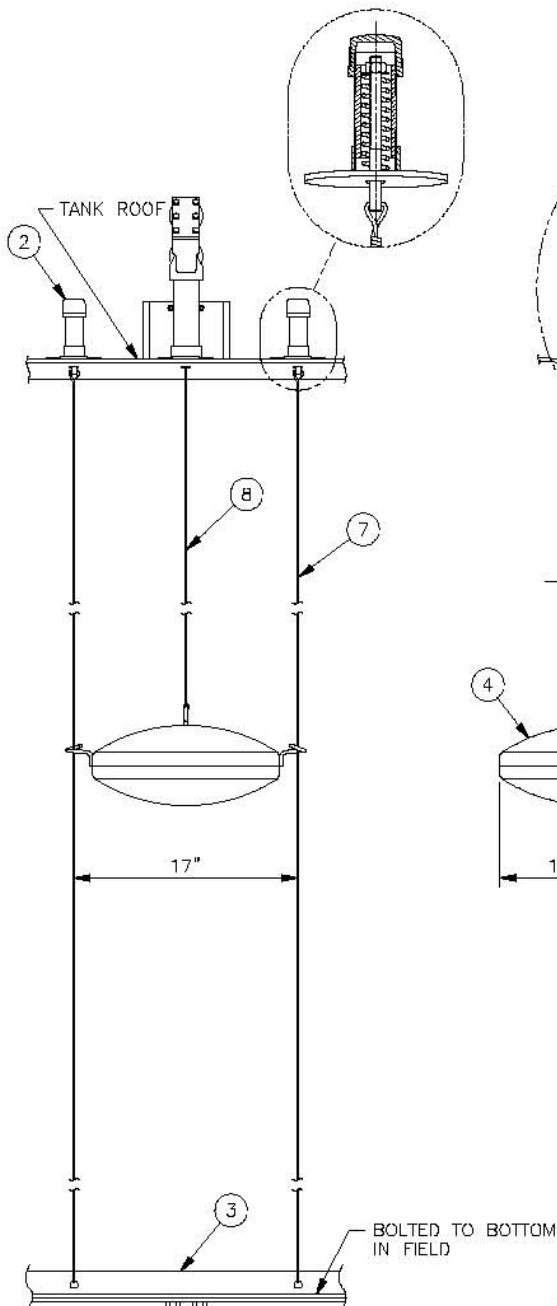
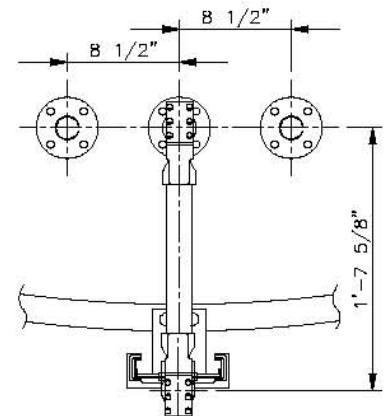
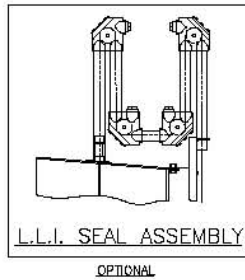
LIQUID LEVEL INDICATOR



- ✓ **For Bolted & Welded Steel Tanks**
- ✓ **Also Available for Glass-Fused to Steel Tanks**
- ✓ **Low Cost & Easy To Install**
- ✓ **Accurate To Within - 1 Inch**
- ✓ **Install On Open, Cone, Floating or Flat Roofs**
- ✓ **316 Stainless Steel Internals**
- ✓ **Easy To Read 4" High Numbers**
- ✓ **English or Metric Units Available**
- ✓ **Rugged Anodized Aluminum Board**
- ✓ **Liquid Seal Available**
- ✓ **Large Inventory In Stock**
- ✓ **Full or Half Travel Available**
- ✓ **No Height Limitations**
- ✓ **Custom Features Available**
- ✓ **Adaptable To Other Type Tanks**

LIQUID LEVEL INDICATOR

ITEM	DESCRIPTION	STD. MATL'S
1	SHEAVE ELBOW	CAST ALUMINUM
2	TOP ANCHOR	STEEL (GALV.) w/ 316 SST. INT.
3	BOTTOM ANCHOR	STEEL (GALV.)
4	FLOAT	316 SST.
5	SUPPORT BRACKET	STEEL (GALV.)
6	INDICATOR	CAST ZINC
7	FLOAT GUIDE WIRE	316 SST.
8	FLOAT CABLE	316 SST.
9	GAUGE BOARD	ALUMINUM
10	CABLE CRIMP FITTING	STAINLESS STEEL
11	PIPING NIPPLES	1 1/2" Ø PIPE (GALV.)



UNITED STATES SALES AND SERVICE LOCATIONS

RANCHO CUCAMONGA 9500 Lucas Ranch Road, Rancho Cucamonga, CA 91730 (909) 912-0580 FAX (909) 912-0588
BAKERSFIELD 19436 Colombo St., Bakersfield, CA 93308 (661) 392-0188 FAX (661) 392-8770
HOUSTON 4812 Old Richmond Road, Rosenberg, TX 77471 (281) 342-0750 FAX (281) 342-0751

www.superiortank.com
e-mail: sales@superiortank.com

VENTAS Y ATENCION AL CLIENTE PARA MEXICO Y CENTRO AMERICA

GUADALAJARA AV. Mariano Otero #3431 Piso 3 Suite 1, Col Verde Valle, Guadalajara, Jal. C.P. 45060 (33) 3123-2586